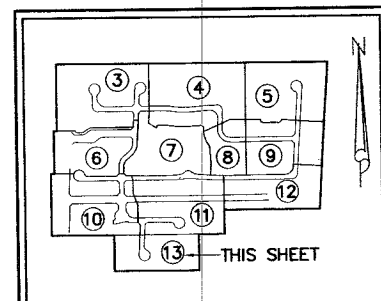
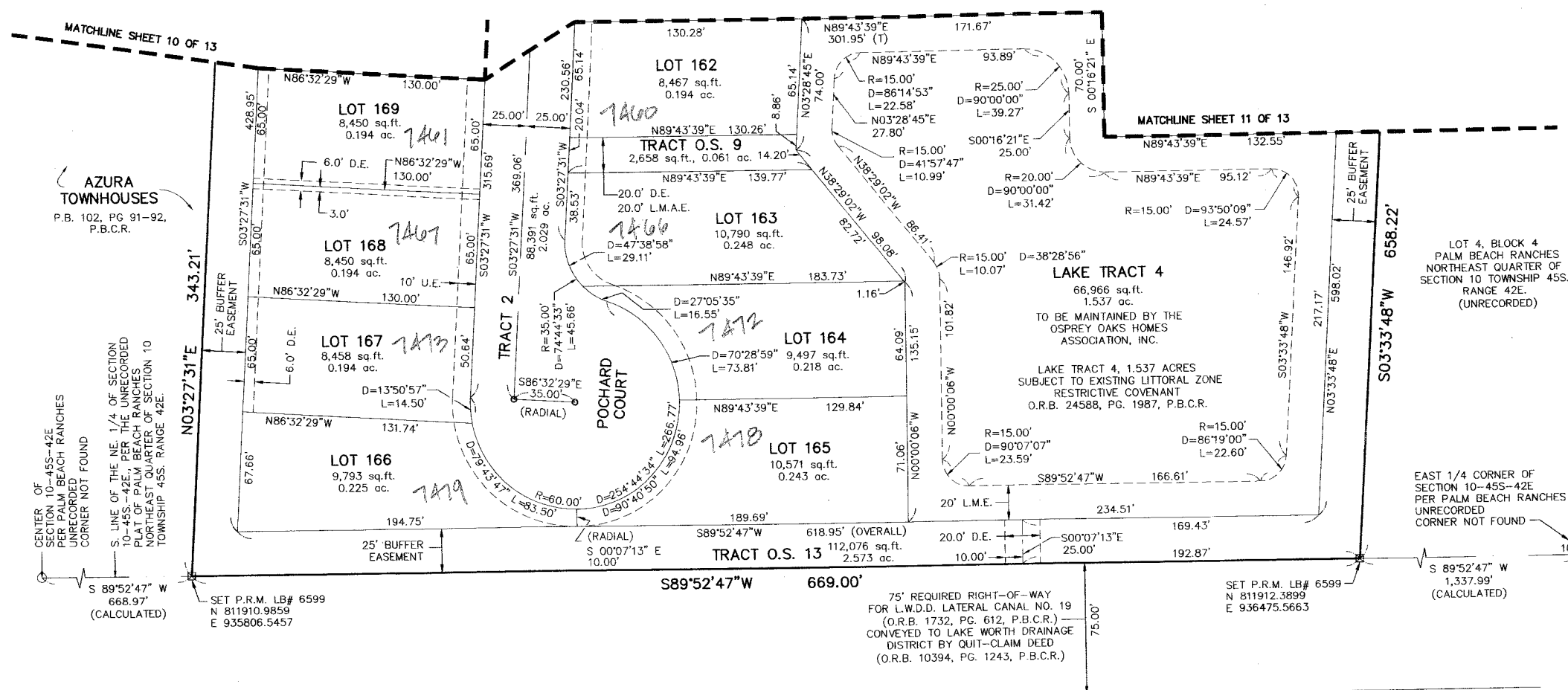


OSPREY OAKS P.U.D.

A PARCEL OF LAND LYING WITHIN THE NORTHEAST ONE-QUARTER OF SECTION 10, TOWNSHIP 45 SOUTH, RANGE 42 EAST, PALM BEACH COUNTY, FLORIDA SHEET 13 OF 13

STATE OF FLORIDA)
COUNTY OF PALM BEACH) S.S.

THIS INSTRUMENT WAS FILED FOR RECORD AT _____ M. THIS _____ DAY OF _____, 20____ AND DULY RECORDED IN: PLAT BOOK _____ ON PAGE _____ SHARON R. BOCK CLERK & COMPTROLLER PALM BEACH COUNTY BY _____ DEPUTY CLERK



KEY MAP NOT TO SCALE

THE SPRINGS-PLAT NO. 1 (PLAT BOOK 80, PAGES 92-95)

- LEGEND**
- D = CENTRAL ANGLE
 - L = ARC LENGTH
 - L.A.E. = LIMITED ACCESS EASEMENT
 - LB = LICENSED BUSINESS
 - L.M.A.E. = LAKE MAINTENANCE ACCESS EASEMENT
 - L.M.E. = LAKE MAINTENANCE EASEMENT
 - O.R.B. = OFFICIAL RECORD BOOK
 - P.B. = PLAT BOOK
 - P.B.C.R. = PALM BEACH COUNTY RECORDS
 - P.B.C.L.S.E. = PALM BEACH COUNTY LIFT STATION EASEMENT
 - P.B.C.U.E. = PALM BEACH COUNTY UTILITY EASEMENT
 - P.C.N. = PARCEL CONTROL NUMBER
 - PG. = PAGE(S)
 - P.R.M. = PERMANENT REFERENCE MONUMENT
 - R = RADIUS
 - (T) = TOTAL
 - U.E. = UTILITY EASEMENT
 - = PERMANENT REFERENCE MONUMENT (P.R.M.) 4" x 4" CONCRETE MONUMENT WITH P.K. NAIL IN BRASS DISC STAMPED "PRM LB 6599"
 - = (P.C.P.) SET MAC NAIL IN BRASS DISC LB 6599

COORDINATE TRANSLATION DATA

- COORDINATES SHOWN ARE GRID
- DATUM = NAD 83 1990 ADJUSTMENT
- ZONE = FLORIDA EAST
- LINEAR UNIT = US SURVEY FEET
- COORDINATE SYSTEM 1983 STATE PLANE TRANSVERSE MERCATOR PROJECTION
- GROUND DISTANCE X SCALE FACTOR = GRID DISTANCE
- ALL DISTANCES ARE GROUND UNLESS OTHERWISE NOTED
- SCALE FACTOR = 1.0000329

S 80°22'36" E (PLAT) = 00°00'00"
S 80°22'36" E (GRID) = BEARING ROTATION (PLAT TO GRID)

LINE BETWEEN AND PALM BEACH COUNTY SURVEY SECTION HORIZONTAL CONTROL MONUMENT "CHAR-LAKE" AND "COURSE"

DENNIS J. LEAVY & ASSOCIATES, INC.
LAND SURVEYORS AND MAPPERS

460 BUSINESS PARK WAY * SUITE B * ROYAL PALM BEACH, FL * 33411
PHONE: (561) 753-0650 FAX: (561) 753-0290

THIS INSTRUMENT WAS PREPARED BY: DAVID A. BOWER, P.S.M. #5888 IN THE OFFICES OF DENNIS J. LEAVY AND ASSOCIATES, INC. CERTIFICATE OF AUTHORIZATION NUMBER: LB6599 460 BUSINESS PARK WAY, SUITE B ROYAL PALM BEACH, FLORIDA 33411 PHONE: (561) 753 - 0650 FAX: (561) 753 - 0290

SCALE: AS SHOWN	CHECKED BY: DAB	DATE: 01/04/11
DRAWN BY: RRM	JOB NO.: 10-062-001	